

Exploring Kauai, The 'Garden Isle'



From jungle hikes and ziplines to golfing, Kauai has plenty on offer for Kiwis looking to rediscover Hawaii this year.

With 90% of the popular Garden Isle inaccessible by car, Hawaii Tourism says hiking is the first recommendation for those clients keen to explore.

HNL Vinyls & Highballs



Clients looking for a new cocktail spot on their next Hawaiian getaway should try Honolulu's EP Bar.

The small bar opened in Jun and boasts a menu of craft cocktails, with an array of vinyls on play.

It specialises in HighBalls, with concoctions such as the EP Highball (Suntory Toki, lemongrass, yuzu and soda) and Pauahi St. Highball (Roku Gin, guava, lemon and soda). It boasts a diverse drinks menu, including sake, and some bar snacks. There is limited seating available, so reservations are highly recommended. Find out more, or book, [HERE](#).

Highlighted spots include Kokee State Park and Waimea Canyon on the West Side, which boasts hundreds of trails with some stunning views. For the adrenaline junkies, recommend they head to the rainforest on a zipline safari with Skyline Hawaii. The experience lets clients 'fly' over three different valleys, with views over both mountains and the ocean. Agents can recommend the eight-line adventure, voted best Kauai Zipline tour and a top activity on Kauai, as well as the five-line 'Family Fun' zipline tour.

For those seeking a quieter pace, there's horseback riding; Kauai is home to a couple of horseback riding companies that offer guided tours ranging from 90 minutes to five hours.

Biking is also popular, with recommended spots including Ke Ala Hele Makalae trail on the east shore for those seeking a leisurely bike ride, and the trail on Waimea Canyon for the more adventurous, which goes 3600 feet down to sea level.

Golf lovers will be spoilt for choice as the island is home to nine golf courses across seven locations. Highlighted is Princeville on the North Shore which offers a challenging option at the Makai Golf Club.

For further details on exploring Kauai, see [HERE](#).

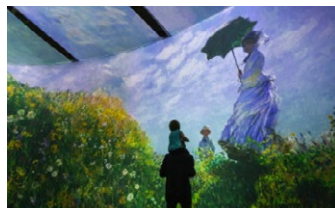
HA's Mamoa Water Move



Hawaiian Airlines is giving its passengers a taste of Jason Mamoa on their next flight, well his water that is. The partnership with Mananalu, the water company founded by the Hawaiian actor and environmental activist, will see HA replace plastic water bottles with Mananalu's infinitely recyclable aluminium bottles in its premium cabins.

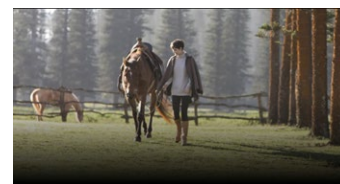
HA says the move will eliminate approximately 142,000 plastic bottles from its transpacific operations each year. Plus for every plastic bottle replaced onboard, Mananalu will divert an additional bottle away from oceans and waterways through its work with leading plastic action platform repurpose Global, resulting in an additional 142,000 bottles removed annually. For further details on HA's environmental initiatives, which includes pledging to achieve net-zero carbon emissions by 2050, see [HERE](#).

Beyond Monet



The Hawaii Convention Center is hosting a new exhibition, Beyond Monet: The Immersive Experience, 15 Jun-31 Jul. The exhibition will feature more than 400 of French painter Claude Monet's most iconic works of impressionism, including his Water Lilies series and Impression: Sunrise and Poppies. See details [HERE](#).

Unbridled Lanai Retreat



Sensei Lanai, A Four Seasons Resort, is offering a new wellness experience, led by equine gestalt coach Devon Combs. Equine gestalt is therapy using horses and the experience focuses on the healing power of horses, with five days of equine experiences as well as vision workshops, spa treatments, yoga, hiking, meditation and more.

The retreat is being held 27-31 Jul, and is limited to just 12 women, and no prior experience with horses is required. Prices start from USD8230 per person, including the aforementioned experiences, as well as gourmet meals, wellness credits, access to complimentary daily activities, a sunset sail and round-trip travel ex Honolulu on Lanai Air. See more details on the retreat [HERE](#).

HA Tactical HNL Fares

Hawaiian Airlines has Honolulu fares from \$497 one-way or \$999 return, including taxes, for sales to 29 Apr and selected travel dates 19 Jul-13 Dec. Add-ons to Neighbour islands apply. Book in L class. The GDS has details.

Sweet Treat Stop



Milky Bar Cereal, has opened its first Oahu location, near Geiger Community Par. The family-owned dessert shop, from Kauai, offers insta-worthy frozen desserts combining ice cream with sweet cereals and a range of toppings. Find out more [HERE](#).

Connect with Aloha

CONNECT TO MAUI, KAUAI AND HAWAII ISLAND WITH MORE THAN 100 FLIGHTS ACROSS THE ISLANDS A DAY.

LEARN MORE AT HAWAIIANAIRLINES.CO.NZ.



HAWAIIAN
AIRLINES.