

# TABS ON TRAVEL TODAY

Incorporating Tabs on Travel

Tuesday 10 November 2015

Issue 3199

Jetstar to fly to the biggest towns in NZ starting with 'N'

Subject to Government and Regulatory approval. Flights are operated by Eastern Australia Airlines for Jetstar Airways.

Napier → Auckland

Jetstar

## IATA: Industry To End '15 On A High

The latest International Air Transport Association (IATA) traffic results show solid year-on-year growth, with international passenger demand up 7.0% on Sep last year.

"The demand for air travel in Sep was robust—even with the economic slowdown in some key emerging markets such as China," says Tony Tyler, IATA's director general and chief executive. "The industry seems set for a positive end to 2015".

Total revenue passenger kilometres (RPKs) for the month under review rose 7.3% compared to Sep '14, and slightly above the 7.1% growth in Aug. IATA says Sep capacity (in available seat kilometres or ASKs) was up 6.6%, while loads were up 0.5 percentage points to 80.7%.

Aviation's connectivity is vital to the health and well-being of the global economy and financial strength is critical to the industry delivering its best," says Tyler. "While the overall outlook is for a collective profit that covers the industry's cost of capital, parts of the industry are really struggling." The IATA boss says the poor economic performance in Brazil is having a negative impact on the industry's performance in Latin America's largest market.

"There are a number of swift policy options that the government could take to stimulate the sector by reducing the burden of onerous taxes, punitive regulation and a crippling fuel pricing regime," he says. "A comprehensive policy response would unleash the power of aviation connectivity and pay big dividends across the economy."

### ... International

The figures show airlines in all regions recorded growth for Sep. Total capacity climbed 6.9%, and load factor climbed 0.1 percentage points to 80.5%. By region, Asia-Pacific airline traffic was up 6.8% for Sep, year-on-year. At the same time regional air capacity increased 5.9% and loads climbed 0.7 points to 77.0%, compared to Sep '14. "The healthy performance occurred in spite of notable declines in trade activity in emerging Asia as well as slower than expected growth in China," notes IATA.



### A FEAST FOR THE SENSES

Join us at the La Candelaria Festival, Peru

**CATHAY PACIFIC**  
**Business Class Earlybirds**  
 FROM  
**\$6,369** Plus Taxes  
 SALES TO 14DEC15  
[Click Here](#)

### No Shamu Show

SeaWorld is set to phase out its infamous orca show in San Diego in a move which many are saying is an important first step for the company. Wide spread reports say next year will be the last for its theatrical Shamu show in San Diego as come 2017 it will be replaced with one that is more about orcas' behaviour in the wild, designed for a more natural setting.

However, the announcement does not affect shows with orcas at SeaWorld's parks in Orlando and San Antonio. World Animal Protection urges SeaWorld to phase out the captivity and breeding of marine mammals completely at all of its venues and to contribute to genuine ocean sanctuaries.

"The experience of captive marine mammals is a far cry from their natural lives in the wild, causing extreme suffering and stress for these intelligent creatures."

### AA-QF Announcement

New Zealand Transport Minister Simon Bridges will be on hand in WLG tomorrow as American Airlines and Qantas reveal what the pair say will be 'a major announcement' for the Kiwi market. AA ceo Doug Parker and QF boss Alan Joyce will be at the press conference. As reported yesterday, the carriers are expected to announce an AA-operated AKL-LAX service.

### LH Strikes Continue

A German crew union has rejected a Lufthansa pay offer and reports suggest the strike (said to be costing LH up to EUR10 million a day) could continue through to Fri.

### 8 Pages This Issue

News..... p1, p2, p4, p5, p6  
 Cruising Today..... p3  
 NZ VA Australia Famil..... p7  
 APT Travelmarvel..... p8

LAN TAM  
 LATAM AIRLINES GROUP

**BE A WINNER**

[CLICK HERE FOR DETAILS](#)

Conditions apply.

**"The earlybird gets the savings!"**  
 Peter Driver Guide

**Outback Safari**

Save up to **\$1060** per couple  
 When you pay in full on or before 30 Nov 2015\*

**11 day Guided Holiday from \$4545** per person twin share\*  
 Ayers Rock to Darwin

\*Conditions apply

[Find out more](#)

**AATKings**

**Nobody knows Australia like Qantas.**

Only Qantas fly to over 55 destinations across Australia. Visit [qantas.co.nz/agents](http://qantas.co.nz/agents) for more details.

**QANTAS**

oneworld

### SQ Asia Earlybirds

Singapore Airlines has released a number of earlybird fares to destinations in its Asian network, ex Auckland, for sales to 07 Dec and travel outbound 19 Jan-30 Sep.

Singapore economy class return is from \$1277; premium economy is from \$2619; and business class is from \$4184. Delhi economy class return is from \$1799; and premium economy is from \$2952.

Guangzhou economy class return is from \$1305; whilst Denpasar Bali is from \$1485. Premium economy class return is from \$2907 to Mumbai; \$2702 to Tokyo; and \$3304 to Dubai. Business class return is from \$4298 to Kuala Lumpur; and from \$4391 to Shanghai.

Domestic add-ons are also available to/from all New Zealand destinations.

### ... Value-adds

Valid for tickets issued 10-20 Nov, clients can enjoy a Singapore Explorer Pass from \$2; and double KrisFlyer Miles on economy class special fares (V, N and Q Class). And for tickets issued 10-30 Nov, clients can enjoy SGD50 savings on KrisShop's pre-order purchases; and bonus KrisFlyer miles on hotel and car rental bookings.

For full details see krisport.co.nz

### Greater Istanbul Access

Kiwis travelling to Turkey will have even greater access to Istanbul as Emirates has announced a daily service to Sabiha Gokcen Airport, ex Dubai, beginning 15 Dec.

The new service will be operated by an Airbus A330-200 aircraft in a three-class layout. Tickets are available for purchase now.

## EK To Showcase Two-class A380

Emirates is set to unveil its first two-class configured A380 at this week's Dubai Airshow.

The aircraft, EK's 68th A380, was delivered directly from Airbus in Hamburg Finkenwerder to the show site, allowing attendees to be among the first onboard to see the brand new

double-decker. Anticipated to be popular with aviation enthusiasts visiting the Dubai Airshow, EK's two-class configured A380 features 58 flatbed seats in business class and 557 seats in economy class, as well as an onboard lounge. The economy class screens are among the widest in the industry, measuring in at 13.3 inches.

"The Dubai Airshow has grown to become a key event in the aviation and aerospace calendar and it is fitting that the aircraft on display this year embody the growth of EK as a global airline and as an enabler focusing on meeting the future demand for highly skilled professional airline pilot," says EK Airline & Group chairman and chief executive HH Sheikh Ahmed bin Saeed Al Maktoum.

EK will also be displaying its newly acquired Cirrus SR 22 and Embraer Phenom 100 jets, which will be utilised by the EK Flight Training Academy.

The two-class A380 will soon enter service and is to be deployed to Copenhagen 01 Dec. To watch the aircraft's take-off flight for its ferry flight to Dubai, [CLICK HERE](#)

Travelmarvel

EXCLUSIVE AGENT RATE

See page 8

### Bali Flight Disruptions

The Bali ash cloud is continuing to disrupt flying conditions, with Virgin Australia this afternoon saying conditions in the vicinity of Denpasar Airport remain unfavourable for flying. As a result, it has cancelled all flights between Denpasar and Australia today and all flights from Australia to Denpasar tomorrow. "As Mt Rinjani continues to erupt and flying conditions remain unpredictable in the days to come, our priority is to bring guests home from Bali, rather than fly more guests in who could potentially be delayed in returning home. . . " VA passengers who have not yet commenced their journeys to Bali have been offered the option of travelling to a number of alternative destinations. Clients whose flights have been cancelled will be advised via e-mail or SMS.

Meanwhile, Allianz advises that there are no changes to its latest travel advisory.

### Tahiti Fares

Air Tahiti Nui has return flights ex Auckland to Papeete from \$899, for sale until 23 Nov and travel 20 Jan-30 Jun.

## News & Product

### SQ To Dusseldorf

Dusseldorf will become the third German city in Singapore Airlines' route network next year, when non-stop flights are introduced from Singapore. They're to be launched 21 Jul using the new Airbus A350-900, which will be the latest addition to the SQ's fleet. Subject to regulatory approval, SQ337 will depart Singapore on a Mon, Thu and Sat, whilst return flights will depart Dusseldorf on a Tue, Fri and Sun.

### Hopman Cup Package

GO Holidays has two nights' accommodation and a ticket to Perth's Hopman Cup from \$275pp s/t for sale to 14 Nov and travel 02-10 Jan.

TABS ON  
**TRAVEL  
TODAY**

Instant  
Poll

Where do you think Air NZ's next two long-haul routes will be to?

[CLICK HERE TO VOTE](#)

## CLIPSAL 500 - V8 SUPERCARS

Adelaide Street Circuit, Australia  
(03-06 March 2016)

GO  
HOLIDAYS!  
SPORTS & EVENTS

4 NIGHTS FROM \$709

PER PERSON, TWIN SHARE (FLIGHTS ADDITIONAL)

PACKAGE ON SALE NOW! [CLICK HERE FOR DETAILS](#)

Colours of Peru  
15 days from \$4820 pp  
Small group tour of Peru



0800 131 900 info@vivaexpeditions.com  
www.vivaexpeditions.com

Viva!  
EXPEDITIONS

South America Travel & Tours



## Hurtigruten's Four-ship Remodel



Four of Hurtigruten's costal ships will undergo a total makeover in 2016 as part of a refurbishment programme, 'reinventing the Hurtigruten experience'.

"We are a first mover company and we are now reinventing the Hurtigruten experience," says Hurtigruten chief executive Daniel Skjeldam. "By combining tradition, innovation and sustainability, we aim to ensure the position as world leader in nature-based explorer travels in polar waters." MS Polarlys will be the first ship to be refurbished in Jan, during a 22-day programme of round the clock works, followed by MS Kong Harald, MS Nordkapp and MS Nordnorge. The ships will be fitted with a modern Scandinavian interior, reflecting the coastal landscapes of the Arctic. All common areas of the ships will see



changes with the reception areas, cafes, bistro areas and the aft deck all to be renovated. A highlight will be new, stylish restaurants with a Nordic feel, set to accompany the local Norwegian cuisine served onboard, with menus changing every day to reflect the specialties of the area the ship is sailing through. Additionally, a range of fresh pastries baked onboard will be served and a new feature will be barbecue stands out on deck.

The renovation work is being undertaken by the Norwegian Fosen Yard, who won the contract following an international tender process.

### HAL Euro 2017

Holland America Line is hard at work designing its Europe 2017 season, and Francis Travel Marketing advises they are on track to be open for sale by Dec. The ms Prinsendam will open by 04 Dec, whilst the rest will be available 18 Dec. Agents are advised to keep an eye out for specials as a new approach will see Europe 2017 launched as part of HAL's upcoming wave season promotion. Clients will be able to book either 2016 or 2017 Europe and receive all of the promotional offers, including free stateroom upgrades, shore excursion discounts and up to 25% off Collectors' Voyages.

### New Gastropub

Princess Cruises is debuting The Salty Dog Gastropub onboard Crown Princess, pairing gourmet small dishes inspired by pub favourites with craft beers, cocktails and wine. Presented each night within the Wheelhouse Bar, clients will have the choice of three small plates from The Salty Dog Gastropub menu, featuring new twists on classic pub dishes, such as Lobster Mac & Cheese, Pale Ale Pork Cheeks and more, for USD19.

### Quirky 3D Souvenir

Costa Cruises has come up with a unique souvenir for its clients—a 3D scale statuette. Thanks to its partnership with Labs3D, onboard experts will complete a body scan in just a few minutes before it is sent off to be created into a miniature 3D reproduction of that person. There are five sizes available, starting from EUR89.

### Cirque At Sea

In a first at sea, brand new Cirque du Soleil shows will be created exclusively for MSC Cruises guests aboard its next-generation Meraviglia ships. The partnership between the two will see a completely custom-made, latest-technology dining and entertainment venue, worth EUR20 million, to become the first of its kind at sea. There will be Cirque du Soleil shows, six nights a week, with two performances per night. The first of four next-generation Meraviglia project ships, MSC Meraviglia, will sail its inaugural season in the Mediterranean from Jun 2017.

### Malaysian Islands

Star Cruises has a five-night cruise exploring the Malaysian Islands, Singapore return. GO Holidays says it is priced from \$1285 and is on sale to 30 Nov for select dates 15 Nov-20 Mar.

**preVU**  
trade

**Where Travel Agents  
go for information on:**

- \* Destinations
- \* Hotels
- \* Resorts
- \* Activities
- \* Tours
- \* Transport
- \* Sightseeing
- \* Restaurants
- \* Shopping
- \* Events
- \* and much more

**CLICK HERE**

and be informed to  
earn more commission!

**2016 UK & Europe on sale now!**

**SAVE 10%\***

**Book & deposit by 1 December 2015!**

**CLICK HERE FOR DETAILS**

For bookings call **0800 456 287**

\*Conditions apply.

**COSMOS®**



## WA Health Retreat

A new five-day health and wellbeing retreat is available in Western Australia's South West 21-25 Feb, advises Tourism Western Australia. Revive Weight Loss Retreat, for ladies, will feature coastal hikes, yoga, surfing lessons, pilates, meditations, seminars and cooking lessons. It will be held at Smiths Beach Resort in Yallingup. For further details see [reviveweightlossretreat.com.au](http://reviveweightlossretreat.com.au)

ISSN 1176-5275

Travel Today (incorporating Tabs on Travel) is published by Tabs on Travel Ltd, New Zealand. Ph +64-9-415 8111. [news@traveltoday.co.nz](mailto:news@traveltoday.co.nz) [tony@traveltoday.co.nz](mailto:tony@traveltoday.co.nz)

[Click Here to Subscribe](#)

© All contents are copyright, and must not be transmitted or copied without specific approval.

PO Box 305-167, Triton Plaza, Auckland 0757, New Zealand. Bld F, 14-22 Triton Dr, Albany, Auckland 0632, New Zealand.

## Virgin Australia 's Kiwi Fare Rejig

**Virgin Australia has today announced changes to its short haul international fare structure, for point of sale in New Zealand.**

Effective 19 Nov, VA says there will be fare increases for its economy and business class fares to: AKL-BNE, AKL-SYD, AKL-MEL, AKL-OOL, CHC-BNE, CHC-SYD, CHC-MEL, CHC-OOL, WLG-BNE, WLG-SYD, WLG-MEL, ZQN-BNE, ZQN-SYD, ZQN-MEL, AKL-MCY, DUD-BNE.

The carrier is urging Kiwi agents to ticket any existing bookings by 2359 (AEST) Wed 18 Nov to avoid any potential fare increases.

VA says the GDSs will be updated with new fare levels from 19 Nov. New faresheets will be distributed in line with this change on/after 19 Nov, it adds.

## More Donny & Marie

Entertainers Donny & Marie have extended their Vegas season through until the end of 2016. The pair has been performing at the Flamingo Las Vegas for seven years—and is apparently still in hot demand. Tickets are priced from USD95 to USD260, plus tax, advises Discover The World. For more, see [www.flamingolasvegas.com](http://www.flamingolasvegas.com)



## Prospect Heights Highlights

NYC & Company is shining a spotlight on Prospect Heights, Brooklyn, saying it has a 'trendy and welcoming vibe' that appeals to both travellers and locals. It says highlights include the Brooklyn Museum and the Brooklyn Botanic Garden next door; whilst to dine like a local they recommend clients visit Chuko Ramen, The Islands and Tom's Restaurant; and for those who wish to shop like a local, they recommend Empire Mayonnaise and Unnameable Books. Additionally, for those who wish to experience the night life, Tooker Alley and Weather Up are both hot spots. The neighbourhood is easily accessible by the 2, 3, 4, 5, B, D, N, Q and R subway lines. To see more tips from locals, [CLICK HERE](#)

## Kidnap Notes, Knives

An Aussie man was reportedly detained at London's Gatwick Airport after security found kidnap notes and a hunting knife in his luggage. However, as it turns out, he had a reasonable explanation as the notes were part of a stag do prank – he was planning to kidnap the husband-to-be – whilst he was unaware that the knife was too large according to UK laws.

A STAR ALLIANCE MEMBER

**#FEEL  
RARO** AIR NEW ZEALAND

# #FeelRaro

## Agent Famil programme

Visit [airnzagent.co.nz](http://airnzagent.co.nz) for details.

Hurry,  
registrations  
close  
11 Nov 2015



### Mobile Dependence

Airline passengers at Mexico's airports are increasingly using their mobile devices to book, check-in and board their flights, according to a survey released by SITA.

The SITA Passenger IT Trends Survey 2015, carried out at six international airports in Mexico that together manage 72% of all the country's passenger traffic, indicates a preference among passengers to move from face-to-face services to mobile.

Today, 84% carry a smartphone – whereas across the population of Mexico only 25% carry one – whilst 50% of passengers carry a laptop, 35% a tablet and 15% carry all three. By 2016, this is thought to increase to nearly one-third, or 31% of passengers who will book flights using a mobile device.

### Online Check-in Soars

Meanwhile, the rate of check-in using a mobile device will more than double from today's 10% up to 24%. Using a mobile device to board is also becoming increasingly popular with 18% expecting to do so by their next flight. "Looking ahead, knowing that mobile services are the desired use for the future can help direct industry leaders to consider these and other self-service options, such as bag drop, to help them efficiently manage growing passenger numbers," says SITA vp Latin America and Caribbean Alex Covarrubias.

### Am. Samoa Wi-Fi

The Tradewinds Hotel in American Samoa has upgraded their guest Wi-Fi system, enabling high speed access in all rooms and around the grounds, advises the American Samoa Visitors Bureau.

## Urban Engaging Local Cultures



**Urban Adventures has won the travel industry equivalent of the Oscar for empowering local communities.**

Announced last week, the brand won the top spot in the World Responsible Tourism Awards category of Engaging People and Culture, which honours holidays that celebrate local people, traditions and ways of life.

The award comes at the perfect time for Urban Adventures who have just launched a new product line-up supporting social enterprises in communities around the globe. Its In Focus series takes travellers on a deep dive into work being done by local NGOs, non-profits, and accelerators in struggling communities. These include Outcast Bucharest which provides employment to homeless locals and enables travellers to understand what life is like on city streets; the Bangalore Solar Slum Tour which shows travellers a local initiative to eliminate indoor air pollution from kerosene lamps in India's urban slums; and the Taipei Sweet Potato Mama Project which introduces travellers to Taiwanese single mothers who earn their living selling potatoes as street snacks.

"The places where some of these stories are being played out are not on the usual tourist route," says Urban Adventures general manager Tony Carne. "The benefits of tourism don't reach these people—and that is part of the current problem but also the opportunity for the solution."

Additional tours are in the works and will be available in the coming months, with Johannesburg and Sydney next on the launch list.

## News & Product

### New Delhi Hotel Update

AccorHotels has combined a Pullman & Novotel New Delhi project which will add 670 international-standard rooms at the gateway to India. The 270-room Pullman New Delhi and 400-room Novotel New Delhi Aerocity are located in close proximity to Indra Gandhi International Airport and offer easy access to the business hubs of Gurgaon and New Delhi. Guests of both hotels will have access to the dining and leisure options of the combined complex, as well as convention space and more.

### Elvis On Show

Clients visiting New South Wales 06-10 Jan can make the most of free entertainment 1000-2230, thanks to the 2016 Parkes Elvis Festival at the Cooke Park Main Stage. Highlights include an free Cinema Under the Stars screening of the Fun In Acapulco movie, followed by performances by the likes of rock 'n' roll band the Midnight Drifters, the Trilogy: Three Decades of Elvis tribute show, the Elvis Gospel Service and more. There will also be Junior and Senior Elvis and Priscilla Look-a-Like competitions as well as a McDonald's Rock 'n' Roll Dancing Competition. For full details see parkselvisfestival.com.au



## Business Development Manager

NEW ZEALAND

**Back-Roads Touring is a unique small group touring concept offering fascinating and leisurely regional tours throughout the UK & Europe.**

With small group sizes, we provide an intimate and relaxing travel experience, taking our guests off the freeways and onto the back roads to enjoy seasonal cuisine, charming accommodation and authentic cultural experiences.

This is a fantastic opportunity for a passionate individual to join our growing team and represent an innovative brand and style of touring. This position will be based in Auckland.

### Key Responsibilities & Requirements

- Managing trade relationships within New Zealand
- Building and nurturing travel agency partnerships with the ability to prioritise those agencies which you identify as having the best growth potential for the brand
- Increasing trade sales from New Zealand year on year with aggressive annual growth targets for the brand
- Developing and providing training sessions for agency partners initially and then ongoing for new starts
- 3+ years of business development management within the travel industry
- The ability to travel extensively

Applications which do not address these points will not be considered. Only short-listed applicants will be contacted.

Please send your application and supporting letter to  
Hugh.Houston@backroadstouring.com.au by 20th November.

**www.backroadstouring.com**

**VA & NZ  
Experience  
Australia Famil  
South  
Australia**

**CLICK HERE**

to download  
this Travel  
Today feature

**TRAVEL  
TODAY**



## London 2016 Highlights

From blockbuster exhibitions, anniversaries and commemorations to light festivals and on-stage magic, 2016 in London is expected to be better than ever, and visitlondon.com has highlighted the best of what's in store. To kick things off there's the Lumiere London 2016 light festival 14-17 Jan, which will see a number of 3D projections and installations on show throughout the city. Meanwhile, *Exhibitionism*, the first international exhibition on the Rolling Stones will take over two floors of the Saatchi Gallery 05 Apr-04 Sep; whilst the eighth story in the *Harry Potter Series*, *Harry Potter and the Cursed Child Parts I and II* will make its debut at The Palace Theatre 06 Jun-30 Jul. For the full line-up of 2016 events and offerings, see visitlondon.com

## Industry Diary

### NOVEMBER

#### Exotic Holidays Roadshow

**Hamilton:** Mon 16, Little India, 1730.

**Auckland:** Tue 17, India Gate, 1730.

**New Plymouth:** Wed 18, Pankawalla, 1730.

**Christchurch:** Thu 19, Kinara, 1730.

**Dunedin:** Fri 20, Little India, 1730.

**Wellington:** Mon 23, Tulsi, 1730.

**Napier:** Tue 24, Indigo, 1230.

**Hastings:** Tue 24, Star of India, 1730.

**Tauranga:** Wed 25, Little India, 1730.

### FEBRUARY 2016

#### Brand USA - Discover America Events

**Christchurch:** Mon 22, Rydges Latimar Hotel, 1700-2130.

**Auckland:** Tue 23, The Cloud, Queens Wharf, 1700-2130.

#### JAWS Roadshow

**Dunedin:** Mon 29.

Venues, times tba.

### MARCH 2016

#### JAWS Roadshow

**Christchurch:** Tue 01.

**Nelson:** Wed 02.

**Whangarei:** Tue 08.

**Napier:** Mon 14.

**Wellington:** Tue 15.

**Palmerston North:** Wed 16.

**New Plymouth:** Thu 17.

**Tauranga:** Tue 22.

**Hamilton:** Wed 23.

Venues, times tba.

## It's Beginning To Look A Lot Like Xmas



**Clients visiting London this festive season will have plenty of chances to get into the spirit of things throughout the city.**

The Oxford Street Christmas lights have been switched on again, for what is the 56th year the road has been decorated for the festive period, advises London & Partners. Additionally, The King's Road Christmas lights

were switched on 07 Nov; whilst the Convent Garden now boasts a large Christmas tree and reindeer. Illuminating Carnaby Street this year will be giant disco balls, as well as sparkling lights that will scatter the three floors of restaurants, bars and cafes in nearby Kingly Court, from 12 Nov; and on 15 Nov, the Regent Street Christmas lights will be switched on.

In addition there will be Christmas markets throughout the city. London & Partners says highlights include the Southbank Centre Christmas Market, which runs through to 17 Jan. Clients can browse festive markets as well as live music, free activities and more. Meanwhile the Tate Modern Christmas Market 20 Nov-23 Dec, will see wooden chalets fill the space between the Tate Modern and the Thames, filled with toys, jewellery, decorations, food and more. Or, for one-night only at the Convent Garden 03 Dec, will be the Seven Dials and St Martin's Courtyard Shopping Event. Over 100 fashion stores, beauty brands, hotels, bars and restaurants will offer a 20% discount as well as free activities. The area will be traffic free, and the streets will be filled with street food, live music and entertainment. For the full line up of Christmas markets, [CLICK HERE](#)

### Colossus To Be Rebuilt?

A plan has been put forward to rebuild Greece's famous Colossus of Rhodes statue, which sat near the harbour of Rhodes some 2000 years ago before being toppled by an earthquake. The original iron and bronze statue was 98ft high, but the rebuilt statue would be 400ft and house a museum, cultural centre, exhibition hall and lighthouse.

### Gourmet F&B Trail



Clients who love food and wine will love The High Flyers Gourmet trail, says Tourism Australia. Offered by Ultimate Winery Experiences Australia, the seven-day gourmet food, wine and luxury trail takes in the Barossa Valley, Adelaide Hills and McLaren Vale in South Australia; the Yarra Valley and Mornington Peninsula in Victoria; and Tasmania's Tamar Valley and Hobart. For more, [CLICK HERE](#)

### Beauty Travel App

A new beauty and wellness booking app in Australia is said to be a 'travel essential' for those who want to unwind whilst on holiday. Vaniday.com.au allows clients to book an appointment at a salon near them and will suggest options in accordance to services, distance, price and relevance. Bookings can be made, paid for and completed within two hours.



## Sales Executive

**An exciting opportunity has arisen to join one of the world leading international airlines.**

Malaysia Airlines is looking for a confident professional to join the Sales Team. You will need excellent oral and written communication skills, computer literacy in Powerpoint, Word & Excel, have a team orientated attitude and a desire to succeed.

### You should ideally possess:

- A thorough knowledge of the NZ travel industry including wholesale & distribution.
- Proven sales experience in a service industry, airline is preferable.
- Strong customers focus.
- Ability to develop and maintain key relationships.
- Competency in airline systems including reservations and ticketing.

If you would like a rewarding career with one of the world's premium airlines, please submit your application together with CV & references to:

**Sales & Marketing Manager,  
New Zealand,  
PO Box 3729, AKL 1140  
or email [stan.bennetto@malaysiaairlines.com](mailto:stan.bennetto@malaysiaairlines.com)**

Applications close 23 Nov 15

No applications will be received or discussed by telephone.



## 20% OFF! over 500 titles

[CLICK HERE](#)

Only available to Travel Today readers



# Melbourne Corporate Famil

TABS ON  
**TRAVEL  
TODAY**

Tue 10 Nov 15 p7

## Spoiled For Choice In Event-ful MEL



**Corporate clients heading to Melbourne in the coming months will find plenty to keep them entertained between business, says Tourism Victoria.**

"There's so much coming up in Melbourne, it's our big blockbuster event season—we'll have Ai Wei Wei at the National Gallery, Andy Warhol, then we move in to the tennis, grand prix, Melbourne food and wine festival," says Tourism Vic's New Zealand regional manager Joanna Garrie. "There's always so much happening, it's best for clients to stay on for a few days."

The city is also experiencing much-

needed growth in accommodation, with new hotels like a QT property, Ritz Carlton, and a new development for the Crown all in the pipeline.

"There's more and more room stock coming on board," says Garrie.

Corporate agents have been experiencing Melbourne and surrounds on the final Air New Zealand and Virgin Australia Experience Australia famil this week.

They travelled to the city in VA's business class product, which launched on the Tasman earlier this year.

The group is pictured enjoying views 88 floors above Melbourne from The Edge on the Eureka Skydeck.



### VA Business Time

Virgin Australia stepped up its appeal for corporates by launching its new business class product on the Tasman earlier this year, and it received a big thumbs up from agents on the famil—particularly when it took under 10 minutes to whizz through security, collect their bags and skip to the front of the Customs queue. The roomy seats, in-flight iPads and food (including bircher muesli and sweetcorn fritters with bacon) also received praise.

Pictured on the Auckland-Melbourne flight is: **1** Sweetcorn fritters. **2** Brigitte Lister, HRG. **3** Stephen Hilton, Tandem Travel with Jay Gilbert, Flight Centre.

### MEL Capacity Growth

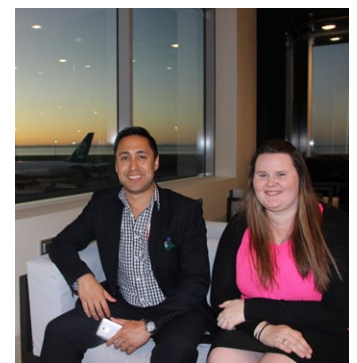
Capacity to Melbourne has grown some 6% during the northern winter compared to the same time last year, thanks to the Air New Zealand and Virgin Australia alliance—and the growth includes increased offering for business travellers.

Capacity growth has primarily been driven by the Auckland-Melbourne route, up 7%—including an NZ wide-body air craft operating the afternoon flight from this northern winter, meaning an extra service offering business class.

With the changes, business class is now offered on three quarters of all flights AKL-MEL, as well as CHC-MEL once a day, while premium economy is available daily AKL-MEL.

### Leading Business Hotel

Grand Hyatt Melbourne was named Australia's Leading Business Hotel at the 22nd Annual World Travel Awards in Hong Kong last month.



### Lounging Around

Agents had the chance to check out Air New Zealand's new lounge at Auckland International Airport on Sat morning—including the outdoor area, where they were able to watch the sun rise over the aircraft on the tarmac.

Pictured is Jay Gilbert, Flight Centre with Ashley Buchanan, Calder and Lawson.

### Shopping Still Top

Shopping remains a key drawcard for Kiwi visitors to Melbourne, and with the NZD still holding fairly strong against the AUD there are plenty of bargains to be had. Agents on the famil spent an afternoon checking out Bourke St Mall, where the size of this purse outside H&M just about matched their spending aspirations. Pictured is Brigitte Lister, HRG; Kayleigh Macher, HRG; Ashley Buchanan, Calder and Lawson; and Jacasta Brown, Orbit Christchurch.



### Living On The Edge

The best way to get a feel for the scale of Melbourne is by heading up to the Eureka Skydeck, where there's views over the entire city. For clients with an added sense of adventure, they can try out the Edge, a glass box which extends over the side of the building, 88 floors up. It's a pretty scary experience and not for those who have a fear of heights. See [eurekaskydeck.com.au](http://eurekaskydeck.com.au)

## TWO AIRLINES ONE TASMAN TEAM

With over 200 flights every week, we're bringing you a bigger, better Trans-Tasman network.

book now | [virginaustralia.com/agents](http://virginaustralia.com/agents) | [airnzagent.co.nz](http://airnzagent.co.nz)



## EXCLUSIVE AGENT RATE

### Vietnam & Cambodia River Cruising

Do you dream of exploring Vietnam & Cambodia? There is no better time than now to bring your travel dreams to life.

- ✓ The perfect balance of comprehensive inclusions, key sightseeing and more free time to explore
- ✓ **Included** – Cruising on the luxurious five-star floating hotel - the RV La Marguerite, with exceptional state-of-the-art onboard facilities and a choice of elegant suites
- ✓ **Included** – All tipping, transfers, onboard entertainment and port charges
- ✓ **Included** – Small group shore excursions with expert local guides and unique 'Insider Experiences'
- ✓ **Included** – All onboard meals, international wine with onboard lunches & dinners, as well as local beer, spirits and soft drink at all times on board the RV La Marguerite



Travelmarvel offers you an Exclusive Agent Rate to experience the remote villages along the Mekong River.

### **AGENT RATE \$795\*pp**

Offer valid for VTM08 & VTMR08 on all 2015 and January 2016 sailings.

Travel Agent rate - \$795\* per person, twin share

Companion rate - \$1,195\* per person, twin share

Solo Traveller rate - \$1,195\* per person

### **BASED ON DELUXE BALCONY SUITE**

#### 8 Day Majestic Mekong (VTM08)



### **CLICK HERE TO APPLY**

**ALL BOOKINGS CONTACT INSIDE SALES: [insidesales@aptouring.com.au](mailto:insidesales@aptouring.com.au)**

\*Conditions apply. Prices are per person based on twin share in a Category A including tipping and port charges. Prices do not include flights. Offer restricted to agency Owners, Managers and selling Travel consultants plus one travelling companion. Subject to availability at time of booking. Prices are correct as at 26 October 2015. Offers are not combinable, available on new bookings only. Offers may be withdrawn at anytime. A surcharge may apply to payments made with credit card. Full payment required at time of booking. Black out dates may apply. Cancellation policy as per 2015 Travelmarvel Vietnam and Cambodia Brochure.  
Australian Pacific Touring Pty Ltd ABN 44 004 684 619 Lic. No. 301121