

Exploring The Great Outdoors

Hawaii is an adventure seeker's paradise, offering a number of outdoor activities for clients who want to explore all of which the islands have to offer.

The Hawaii Visitor and Convention Bureau has compiled a list of its top activities to recommend to Hawaii-bound clients.

In first spot is hiking; Hawaii offers trails on every island for every level of hiker, with over 125 trails featuring the best of Hawaii's landscape. Highlighted options include the scenic rim of Polulu Valley on the island of Hawaii, rainforest walks in Oahu, mountain hikes on Kauai and exploring the old fishponds of Kaloko-Honokohau National Historical Park.

Surfing and stand up paddle boarding, both believed to have originated in the Hawaiian Islands are on the list. Oahu's North Shore is the best place



for those seeking big swells in winter, while in summer south shore spots are the go-to.

Kayaking and canoeing are other highlighted activities. On the Island of Hawaii Kelakekua Bay is the recommended spot, while clients wanting to learn more about outrigger canoe paddling can head to Oahu's Waikiki Beach; and in Kauai clients can explore mountains and rainforests on a kayak down one of its many rivers.

Also attracting a number of visitors to the islands are the snorkelling and diving spots, which are plentiful on every island. Kealahou and Honaunau Bays and Kahaluu Beach Park on Hawaii Island are recommended; along with the reef at Pupukea Beach Park marine life conservation district on Oahu's North Shore; and Molokai's south shore, which is home to the Hawaiian Islands' longest barrier reef. The submerged volcanic crater and open-ocean-facing back wall of Molokini islet off Maui's south shore is also recommended.

HA HNL Sale

Hawaiian Airlines has shortlife fares to Honolulu on sale until 02 Dec for travel 01 Feb-21 Mar. One-way level ex Auckland is from \$329 (O class). Conditions apply. Add-ons are available to all neighbour islands. Visit hawaiianairlines.co.nz

HA New Codeshare

Hawaiian Airlines and JetBlue have expanded their codeshare agreement, making it easier for Kiwis to fly from Hawaii to eastern US cities via Boston's Logan International Airport. The codeshare kicks off in Apr, with passengers able to earn and redeem TrueBlue points or HawaiianMiles for travel on either carrier.



St Regis Acquisition

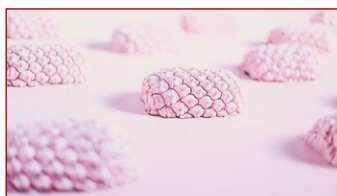
Starwood Capital Group has acquired the 251-room St. Regis Princeville Resort located on the island of Kauai. Starwood Capital Group's hotel management company, SH Hotels & Resorts, will operate the hotel effective immediately as Princeville Resort. This comes as Starwood announces it will invest USD100 million into transforming the property into its 1 Hotel brand flagship resort. More details regarding the transformation will be released closer to time.

Sustainable Christmas

Kauai environmentally-sustainable Festival of Lights celebrates its 22nd anniversary this Christmas. The festival, in the Historic County Building halls, features Christmas trees, wreaths, ornaments, nativity scenes and other seasonal decorations made from recycled and reclaimed materials such as water bottles, aluminum cans and plastic containers. This year the festival features a new 'Fire and Rain Tree', which was inspired by two major weather events in Hawaii this year. The Festival of Lights opens 01 Dec-29 Dec 1800-2000 Fri, Sat and Sun. Admission is free, see kauaifestivaloflights.com

More Cruise Commission

Norwegian Cruise Line is offering Kiwi agents a bonus 3% commission on Pride of America bookings made 01-14 Dec for Hawaii sailings departing from 05 Jan. The cruise line says this is a thank you to the trade for its continued support and that it is committed to all trade partners, 'who are an integral part of the brand's ongoing success'.



Epic Aloha

Clients in Oahu can now delve even deeper into the spirit of Aloha with the new *Epic Aloha* exhibition, which features 12 interactive installations created to inspire Aloha Aina, or love of the land. Located at the Hilton Hawaiian Village Waikiki Beach Resort, entry to Epic Aloha is USD34 for adults and USD24 for ages two-11. Clients are advised to book tickets in advance at epicaloha.com.



Surf Like A Pro In Waikiki

Aloha Beach Services Waikiki, offering surf lessons, canoe surfing and stand up paddle surfing, is the longest running beach service business in Waikiki. The company guarantees all beginner surfers will stand up (and fall down) during the lessons, which start from USD50 per hour, per person for groups and USD100 per hour, per person for private. Meanwhile for a real cultural experience clients can opt for the Outrigger canoe ride, with two wave rides priced from USD20. Groups can also rent or charter an Outrigger canoe and two captains for USD300 per hour. Clients can book tours in advance, or just turn up on the day. It's recommended to come early in the morning, to avoid competing for waves with other surfers. A rash top is provided with lessons, and photos are available at an extra cost. See alohabeachservices.com

Aloha New Zealand

HA offers through fares ex the following cities:
ZQN/DUD/CHC/NSN/WLG/PMR/NPE & NPL

with Jetstar (JQ) to HNL & beyond
2 x 32kg baggage applies

